

Datacard® Photo Pointe™ Solutions



Using Photo Pointe solutions helps ensure crisp, life-like clarity for your full-color digital images.

Fast and easy image capture

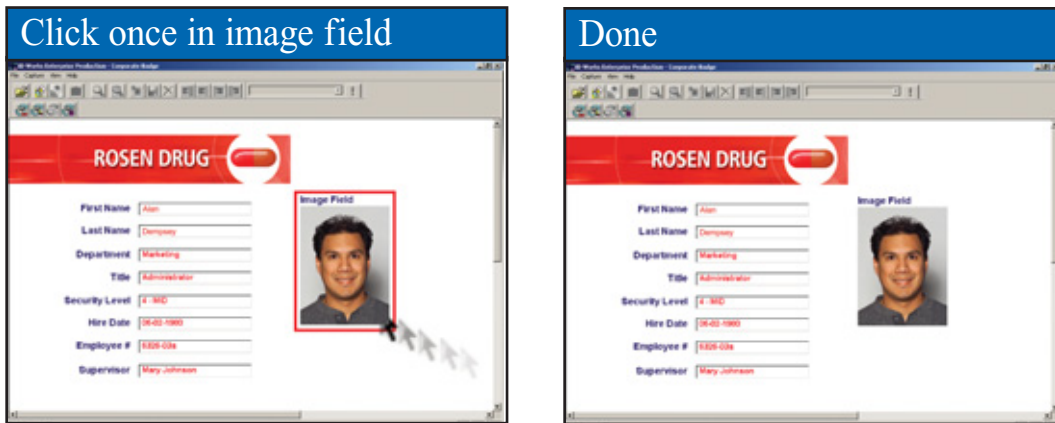
Add speed and productivity to any photo ID process with Datacard® Photo Pointe™ solutions. Photo Pointe software — part of the Datacard® Capture Pointe™ Series software family — makes image capture easy. One click allows you to capture, crop and produce a high-quality digital image in less than seven seconds. No panning, tilting, zooming or other camera adjustments are required. Fully compatible with products from our software and hardware families, Photo Pointe™ solutions make a powerful addition to any integrated photo ID system from Datacard Group.

Choose the solution that meets your needs and fits your budget

- The standard Photo Pointe solution comes with Photo Pointe software, a 5.1 megapixel digital camera and image capture accessories.
- The Photo Pointe Pro solution includes Photo Pointe software, an 8.0 megapixel camera, image capture accessories and an optional high-powered external flash.



Datacard® Photo Pointe™ Solutions



Using your pre-sets for capturing and cropping, Photo Pointe software can produce a high-quality digital image in less than seven seconds.

End-user definable software settings

- Auto capture
- Manual capture of live video
- Auto crop image at a pre-defined ratio
- Manual crop
- White balance environment
- Red-eye reduction

Photo Pointe solution components

- Photo Pointe software with USB security key
- 5.1 megapixel digital camera
- Standard USB cable
- USB extension cable
- AC power supply
- AC power/USB adapter
- Velcro® strap
- Country-specific power cord
- Tripod, backdrop, stand and frame
- Installation instructions

Photo Pointe solution specifications

- Camera dimensions: W 3.8 in. x H 2.5 in. x D 1.0 in. (96.0 mm x 63.0 mm x 26.0 mm), excluding protrusion
- Weights 4.6 oz./130g (camera body only)
- Operates in temperatures from 32° to 104° F (0° to 40° C) with humidity levels of 30% to 90%
- Internal memory
- Flash range of 2 to 6 feet (0.6 to 1.8 meters) from camera
- Agency approvals: CE Mark, FCC Class B, RoHS compliant

Photo Pointe Pro solution components

- Photo Pointe software with USB security key
- 8.0 megapixel digital camera
- Standard 4.0 ft. USB cable
- USB extension cable
- AC power adapter
- Country-specific power cord
- Tripod, backdrop, stand and frame
- Installation instructions
- Optional external flash (120V/240V) components include flash, bracket, synchro cord, hot shoe adapter and country-specific power cord

Photo Pointe Pro solution specifications

- Camera dimensions: W 3.92 in. x H 2.56 in. x D 1.38 in. (99.5 mm x 65.0 mm x 35.0 mm)
- Weights 6.88 oz./195g (camera body only)
- Operates in temperatures from 32° to 104° F (0° to 40° C) with humidity levels of 30% to 90%
- Internal memory
- Flash range of 2 to 6 feet (0.6 to 1.8 meters) from camera
- Agency approvals: CE Mark, FCC Class B, RoHS compliant

Optional external flash specifications

- Adjustable for full, half and quarter power
- Three-second recycle time
- 50,000 flash lifespan (at full power)
- Recommended distance of 6 to 15 feet (1.8 to 4.5 meters)
- 240v flash option not RoHS compliant